

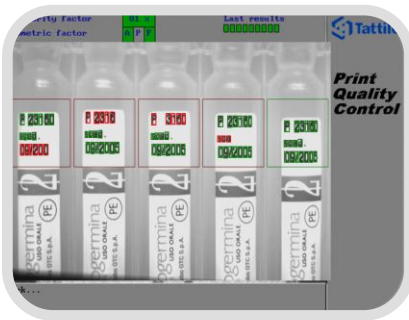


## FEATURES

- Stand alone complete code & character reader
- Fully IP addressable
- Low power consumption
- Progressive scan CMOS sensor technology
- VGA resolution - 640x480 pixels
- High speed camera up to 200 fps
- Integrated led illuminator and optic
- Intuitive graphical development environment
- Superior price performance

## Typical Applications

OCR



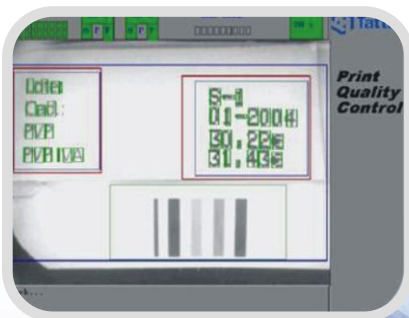
OCV



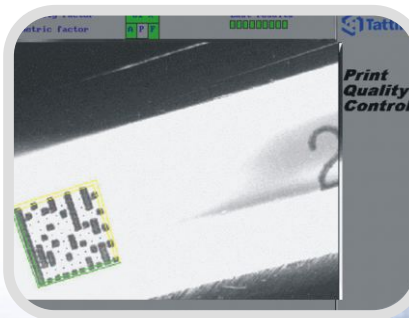
Aluminum OCV



OCV - Barcode



2D Code Data Matrix



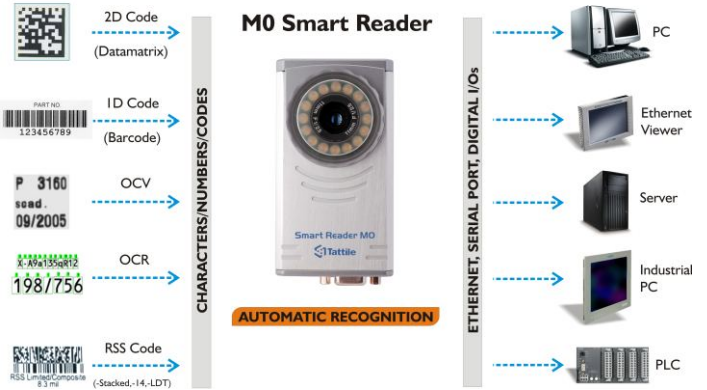
2D Code RSS Type



## Smart Reader MO Intelligent Sensor

### INTELLIGENT CODE & CHARACTER READER

SOFTWARE FEATURES	
<b>OPERATING SYSTEM</b>	
Proprietary Tattile O.S. - TOS	Multitasking Operating System for custom application
<b>PROGRAMMING LANGUAGES</b>	
Antares Explorer	Intuitive graphical development environment with optimized vision library
Ansi C	Standard C environment TIL (Tattile Image Library) supported
<b>COMMUNICATION</b>	
Firmware Update	Ethernet or serial capabilities
Data Exchange	UDP/IP, RS232 or RS485 (optional)



Integrated Optic and LED illuminator



Multitasking  
O.S. On Board



Programming  
Language



Standard Connectors

### TECHNICAL FEATURES

SYSTEM	
Microprocessor	Analog Devices® Blackfin® Technology
Analysis	Up to 200 Fps
Synchronization	External trigger without delay
Software	Antares Engine, PQC – Print Quality Control or custom C program
CAMERA	
Sensor	BW or Color CMOS 1/2"
Acquisition	Progressive scan
Resolution	VGA (640x480 pixels)
Frame rate	200 Fps
Lighter	Integrated circular led lighter (strobed or continuous)
Lens	11 mm (F 2.5) - Integrated lens
DIGITAL I/Os	
Input	1 trigger PNP optoisolated input 24Vdc
Input	2 PNP optoisolated inputs 24 Vdc
Output	1 current output for external lighter management
Output	3 PNP optoisolated outputs 24 Vdc
COMMUNICATION	
Ethernet 10/100 Mbps	UDP, TCP-IP
RS 232	1 line half duplex, baud rate 1200:115.200
ENVIRONMENTAL	
Operating Temp.	-10° to 50° C
Operating Humid.	10 to 90% non cond.
Storage Temp.	-20° to 65° C
Storage Humidity	10 to 90% non cond.
Power Supply	24 Vdc ±10% 3W
Package Body	Anodized Aluminum
Size / Weight	107 x 58 x 37 mm (L x H x W) - 230 g
IP Protection	IP 42