

FEATURES

Model TAG - 2
Line Scan



Encoder management
on board

In-camera real-time image
filtering and processing

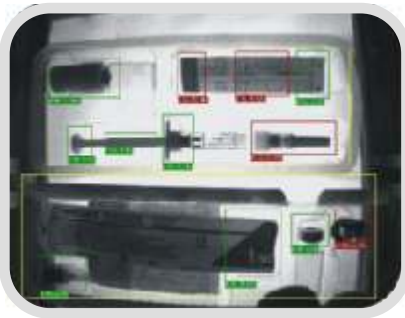


Model TAG 3
Back Focus

- Line Scan and Area Scan available
- Progressive CCD BW and Color
- Back Focal precalibrate for C mount distance
- Image output in RAW or JPG format
- Connection via Gigabit Ethernet
- Up to 50 meters with economic CAT5e cable
- Multiple cameras managed by one PC
- No frame-grabber required
- Minimum PC CPU usage
- SDK, filters & Tutorial to ease SW Development

Typical Applications

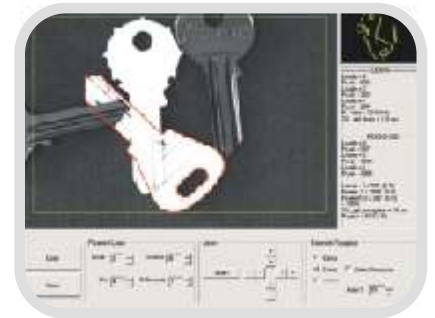
Pharma-Medical



Textile-Paper-Graphic



Digital Vision Inspection



Security



Traffic



Entertainment



Advanced in-camera Functions

ADVANCED IN -CAMERA FUNCTIONS	
IMAGE CAPTURE	
Global Shutter	Capture of all pixels at the exact same time
Asynchronous External Trigger	Maximum 200 microseconds delay
OneShot Software Trigger	For use software triggering of single image
Test Image Generation	To test correct set-up
RGB Gain Control	For white balancing or color correction
Shutter Control	From 60 microseconds to 200 milliseconds
Clamp/Offset Level	For contrast optimisation
Strobe Control	Auto-Synchronised with External Trigger
SERVICES	
Color Space Conversion	RGB 565, RGB 888, Bayer Code (raw) 10 bit, Y
User Definable Area of Interest	To manage bandwidth and CPU utilization
Programmable I/Os	2 inputs and 2 outputs
Multiple Image Output	Transfer both RAW or JPG and filtered images
FILTERS	
Real Time Shading Correction	Image normalization to compensate for lighting

TAG CAMERA family			
MODEL	RESOLUTION	fps	Sensor Size
TAG MBD 640@60	640x480 BW	60	CCD 1/3"
TAG MCD 640@60	640x480 Color	60	CCD 1/3"
TAG MBD 720@50	720x576 BW	50	CCD 1/2"
TAG MCD 720@50	720x576 Color	50	CCD 1/2"
TAG MBD 1000@20	1024x768 BW	24	CCD 1/3"
TAG MCD 1000@20	1024x768 Color	24	CCD 1/3"
TAG MBD 1400@7,5	1360x1024 BW	7,5	CCD 1/2"
TAG MCD 1400@7,5	1360x1024 Color	7,5	CCD 1/2"
TAG MBD 1400@15	1360x1024 BW	15	CCD 2/3"
TAG MCD 1400@15	1360x1024 Color	15	CCD 2/3"
TAG MBD 1600@12	1600x1200 BW	12	CCD 1/1.8"
TAG MCD 1600@12	1600x1200 Color	12	CCD 1/1.8"

TAG - 3 CAMERA family			
MODEL	RESOLUTION	fps	Sensor Size
TAG MBD 640@110	640x480 BW	60	CCD 1/3"
TAG MCD 780@50	782x582 BW	50	CCD 1/2"

Technical Features and TAG Camera Family

TECHNICAL FEATURES	
Network Interface	Giga Ethernet 802.3ab
PC Requirements	Pentium IV, 256 MB RAM
PC operating systems Requirements	MS-Windows XP Professional®, XP Embedded®, Vista®, Linux Kernel version 2.4.xx = 2.4.27 and 2.6 iptables = 1.3.3
Inputs	2 optoisolated inputs 24 Vdc 20mA
Outputs	2 PNP optoisolated outputs 24 Vdc 500mA
GigE Card Compatibility	3Com® Gigabit NIC, Intel PRO/1000MT Desktop Adapter, NetGear GA311/S, Broadcom® NetXtreme™ Gigabit Ethernet Controller
Cable	CAT5e up to 50 meters
Operating Temp.	0° to 50° C
Operating Humid.	10 to 90% non cond.
Storage Temp.	-20° to 65° C
Storage Humidity	10 to 90% non cond.
Power Supply	TAG: 12 Vdc to 24Vdc @ 9W TAG 2: 12 Vdc to 24 Vdc @ 12W TAG 3: 18 vdc to 24 Vdc @ 6W
Package body	Anodized aluminum
Size / Weight	TAG: 115 × 55 × 42 mm (LxHxW) – 277 g TAG 2: 113 x 90 x 70 mm (L x H x W) – 900 g TAG 3: 105 x 42 x 48 (L x H x W) – 320 g
Focal Distance	TAG 3: Precalibrate C mount focal Distance
Lens	C mount (Area Scan), F mount (Line Scan)
Protection level	IP 42

TAG - 2 CAMERA family			
MODEL	RESOLUTION	fps	Sensor Size
TAG LBD 8000@11000	8160 BW	11000 lines/s	
TAG LCD 4000@7000	4080x3 Color	7000 lines/s	
TAG LCD 2000@9000	2048x3 Color	9000 lines/s	
TAG LBD 2048@18000	2048 BW	18000 lines/s	
TAG MBD 640@200	640x480 BW	200	CCD 1/3"
TAG MCD 640@200	640x480 Color	200	CCD 1/3"
TAG MBD 1600@30	1600x1200 BW	30	CCD 4/3"
TAG MCD 1600@30	1600x1200 Color	30	CCD 4/3"



Model TAG - 3, Side View