

B/W or Color CCD



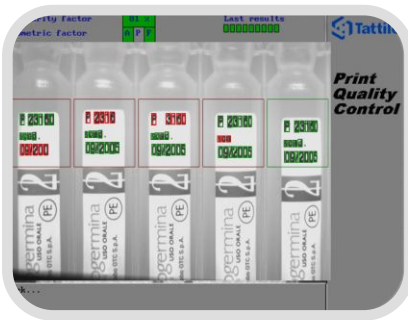
Local Storage on SD memory card

## FEATURES

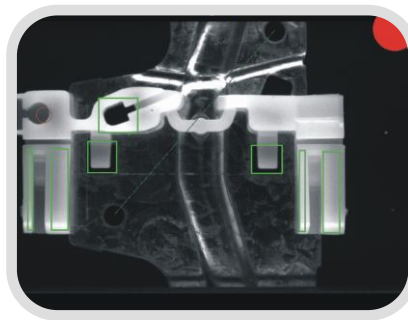
- Stand alone complete vision system
- Fully IP addressable
- Low power consumption
- Progressive scan CCD sensor technology
- High Resolution up to 1600x1200 BW or Color
- Connection via Gigabit Ethernet
- Optimized vision library
- Open system to port your own C application
- Intuitive graphical development environment
- Secure Digital removable storage media

## Typical Applications

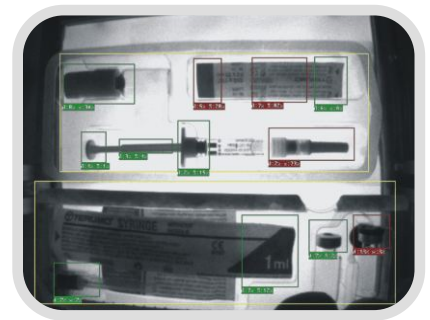
### OCR/OCV



### Inspection



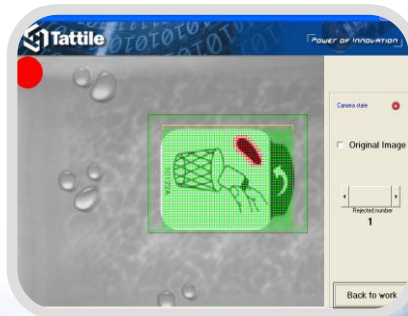
### Blob Analysis



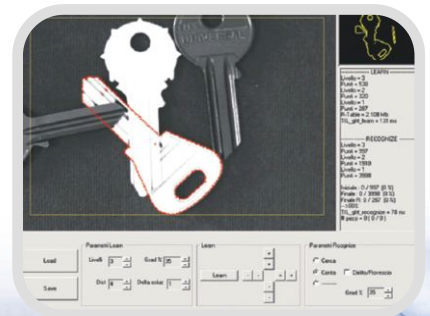
### Color Analysis



### Surface Inspections



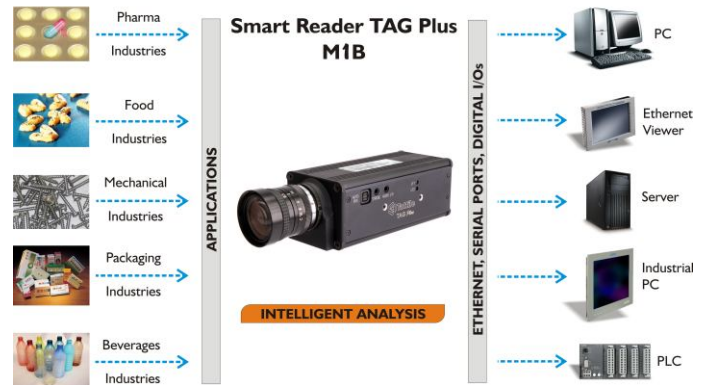
### Pattern Recognition



# Smart Reader TAG Plus

## Powerful Intelligent Vision System

### INTELLIGENT CAMERA



| SOFTWARE FEATURES              |   |
|--------------------------------|---|
| <b>OPERATING SYSTEM</b>        |   |
| Proprietary Tattile O.S. - TOS | Multitask Operating System for custom application   |
| Linux                          | Real time Linux embedded  |
| <b>PROGRAMMING LANGUAGES</b>   |   |
| Antares Explorer               | Intuitive graphical development environment with optimized vision library   |
| Ansi C                         | Standard C environment  |
| ARM Assembler                  | ARM Assembler environment   |
| <b>COMMUNICATION</b>           |   |
| Firmware Update                | Updatable via Ethernet or serial ports  |
| Data Exchange                  | TCP/IP, UDP/IP, RS232 or RS485  |
| <b>CUSTOMIZING TOOLS</b>       |   |
| Custom Tool                    | Ability to add custom C functions to the standard Antares development environment with direct access to TIL (Tattile Image Library) |
| Custom Program                 | You can write a complete new C application program  |
| Software Porting               | Software team to support the porting of your new or existing applications   |

| TECHNICAL FEATURES   |  |
|----------------------|--|
| <b>SYSTEM</b>        |  |
| Microprocessor       | Intel® XScale® @ 733 MHz.                            |
| Co-processor         | Analog Devices® Blackfin® Symmetric Multi-Processor  |
| FPGA                 | Altera® Stratix® (25000 Logic Elements)              |
| Analysis             | Up to 60 Fps   |
| Synchronization      | External trigger without delay                       |
| <b>CAMERA</b>        |  |
| Sensor               | BW or Color CCD                                      |
| Acquisition          | Progressive scan                                     |
| Resolution           | Up to 1600x1200                                      |
| Audio Input          | 1 audio input 1,8 Vpp Z <sub>IN</sub> =12K           |
| Audio Output         | 1 mono audio output                                  |
| Auto IRIS            | Electronic/manual                                    |
| Frame rate           | 60fps @ VGA ; 15fps @1600x1200                       |
| <b>DIGITAL I/O</b>   |  |
| Input                | 2 optoisolated inputs 24 Vdc                         |
| Output               | 3 PNP optoisolated outputs 24 Vdc                    |
| Strobe Output        | 1 open collector fast strobe out                     |
| <b>COMMUNICATION</b> |  |
| Ethernet 10/100/1000 | TCP, UDP, FTP, HTTP                                  |
| RS 232               | 1 line baud rate 1200:115200                         |
| RS 485               | 1 line half duplex baud rate 1200:115200             |
| SD Interface         | Supports all mass memories (transfer rate 1 MB/s)    |
| <b>ENVIRONMENTAL</b> |  |
| Operating Temp.      | -10° to 50° C  |
| Operating Humid.     | 10 to 90% non cond.                                  |
| Storage Temp.        | -20° to 65° C  |
| Storage Humidity     | 10 to 90% non cond.                                  |
| Power Supply         | 12 to 32Vdc ± 5% 7W                                  |
| Package body         | Anodized aluminum                                    |
| Size / Weight        | 142,5 x 49,5 x 60 mm (L x H x W) - 430 g (only body) |
| Lens                 | C mount related to application                       |
| Protection level     | IP 42  |



Standard connectors and slot for SD memory card



Multitasking  
O.S. On Board



Programming  
Language



Audio Input/Output, Strobe,  
Auto Iris electronic and manual